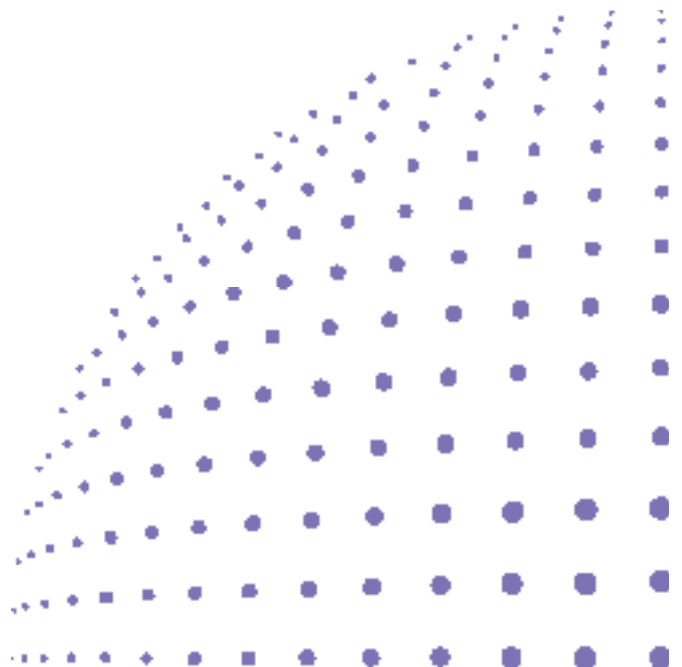


Save resources with effective device management



Optimise fleet performance and productivity

Turn collected data into detailed device knowledge with our @Remote technology, whatever the size of your business.



Intelligent automatic fleet management

- Accurate meter counts are sent on-time with automated meter reading
- Access intelligent reports via @Remote's web portal, enabling you to boost device efficiency
- Maximise reliability with proactive support including call handling, automated toner replacement and firmware upgrades
- Reduce business resources to save time and cost

Optimise fleet performance and productivity

Turn collected data into detailed device knowledge with our @Remote technology, whatever the size of your business. @Remote allows you to manage output devices in a cost-effective and automated way. The Embedded Remote Communication Gate is suitable for smaller businesses, whilst the External Remote Communication Gate can manage complex business requirements with up to 1000 network devices. For larger enterprise organisations the @Remote Enterprise Professional (server-based version) can manage up to 5000 networked devices.

Automated Meter Billing

Gain valuable time and cut administrative costs by optimising your day-to-day device management processes. Your networked MFP and printer meters are automatically read and communicated to the billing centre.

Automated Assistance

Designed for your convenience, @Remote incorporates a number of innovative, service related functionalities. Supply levels of toner are monitored and new supplies are automatically ordered when required. Service call notifications have also been automated, and a technician can be sent to increase your device uptime. In addition, selected devices can now be automatically upgraded with a firmware update from our data centre, without involving the user.

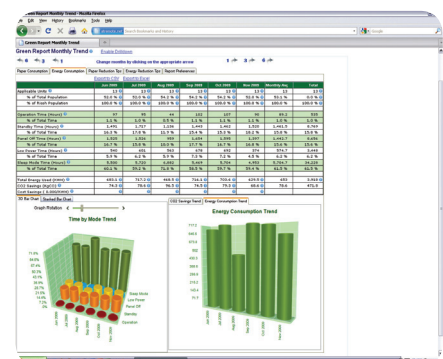
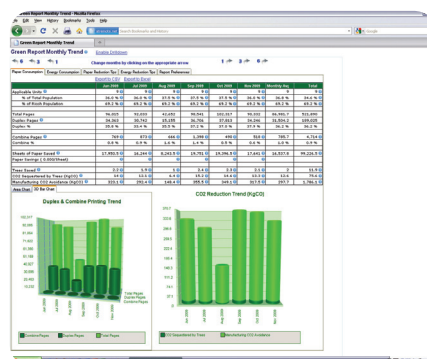
Easy reporting via the web

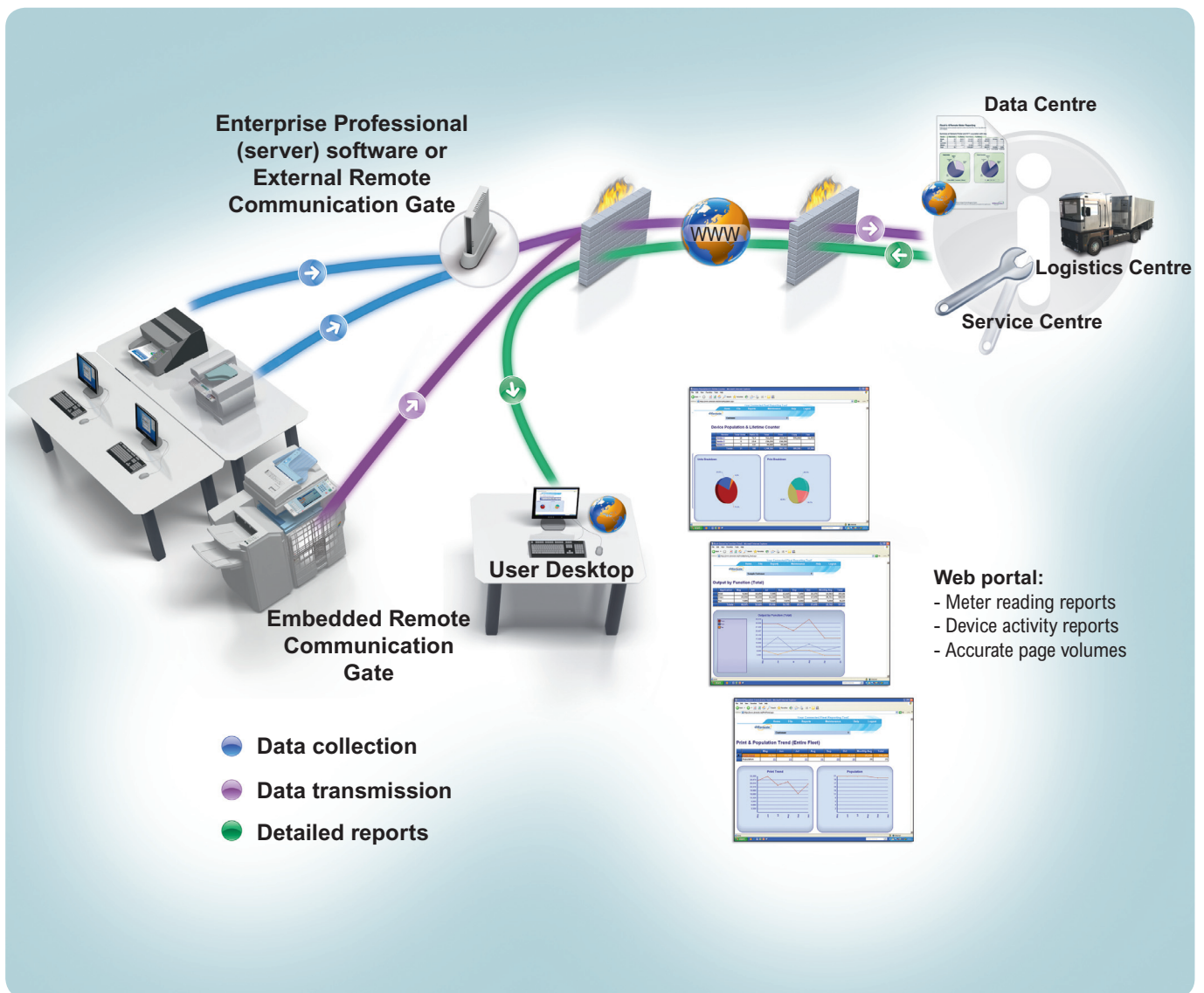
Manage your fleet and maximise device usage with the @Remote web portal. The portal enables you to produce detailed fleet reports 24/7, which can be analysed and used to optimise your device management and increase the return on your IT investment.

Generate Green Reports to optimise your device management

@Remote Web Portal's new functionality, Green Reports, is a good way to track performance from an environmental perspective. Designed to help businesses understand and achieve the potential environmental benefits through better management of their fleet of networked MFPs or Printers.

Green Reports

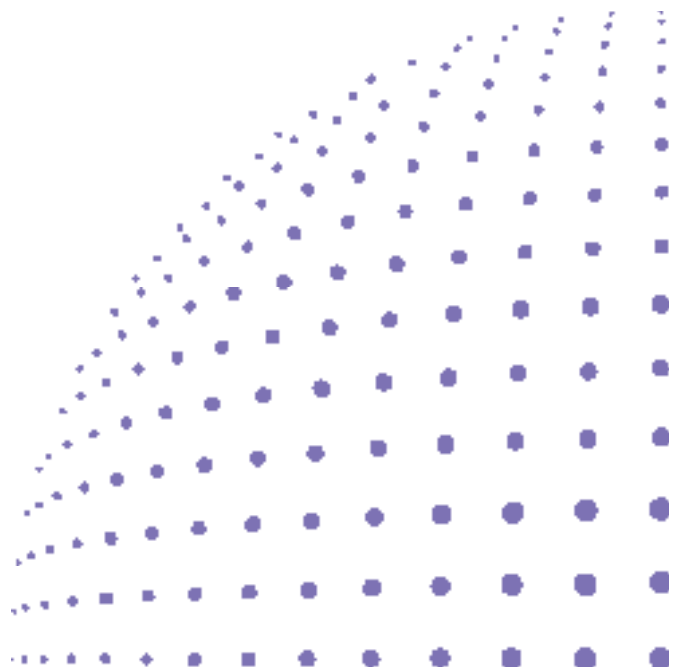




Secure Communications

For your peace of mind, @Remote securely collects data from your networked devices and transmits it to our data centre:

- Mutual Authentication (SSL) takes place before the information is exchanged through HTTPS
- All information exchanged between the Communication Gate and the data centre is encrypted and routed through your organisation's firewall for optimum security
- You can access device information through the @Remote web portal, using your allocated user name and password



@REMOTE - SPECIFICATIONS

Embedded Remote Communication Gate	
Type:	Embedded
Interface:	-
Managing Service:	Networked MFPs and Printers
Maximum number of managed devices:	1
Environment:	10-32C (50-89.6F), 15-80% Relative humidity
Display:	-
Power:	-
Power Consumption:	-
Dimensions:	-
Weight:	-

Server (Software) Remote Communication Gate	
Type:	Server software (Enterprise Professional)
Interface:	-
Managing Service:	Networked MFPs and Printers
Maximum number of managed devices:	5000
Environment:	-
Display:	-
Power:	-
Power Consumption:	-
Dimensions:	-
Weight:	-

External Remote Communication Gate	
Type:	External Box
Interface:	10/100BASE TX
Managing Service:	Networked MFPs and Printers
Maximum number of managed devices:	100 (1000 Enhanced option)
Environment:	10-32C (50-89.6F), 15-80% Relative humidity
Display:	LCD 2 Lines 16 Digits LED Power (Green) x 1 and Alert (Red) x 1
Power:	AC220V-240V, 50Hz
Power Consumption:	20W
Dimensions:	Width 253mm, Length 160mm, Height 48mm
Weight:	0.8kg



Our earth.
Our tomorrow.

RICOH

All company, brand, product and service names are the property of and are registered trademarks of their respective owners. Specifications, external appearance and the full range of options featured in this brochure are subject to change without notice.

Copyright © 2009 Ricoh Europe PLC.

All rights reserved. This brochure, its contents and/or layout may not be modified and/or adapted, copied in part or in whole and/or incorporated into other works without the prior written permission of Ricoh Europe PLC.

www.ricoh-europe.com